

# UNIT 5A



# GRAMERCY GATES

327 East 22nd Street

2 Bedroom  
2 Bathroom

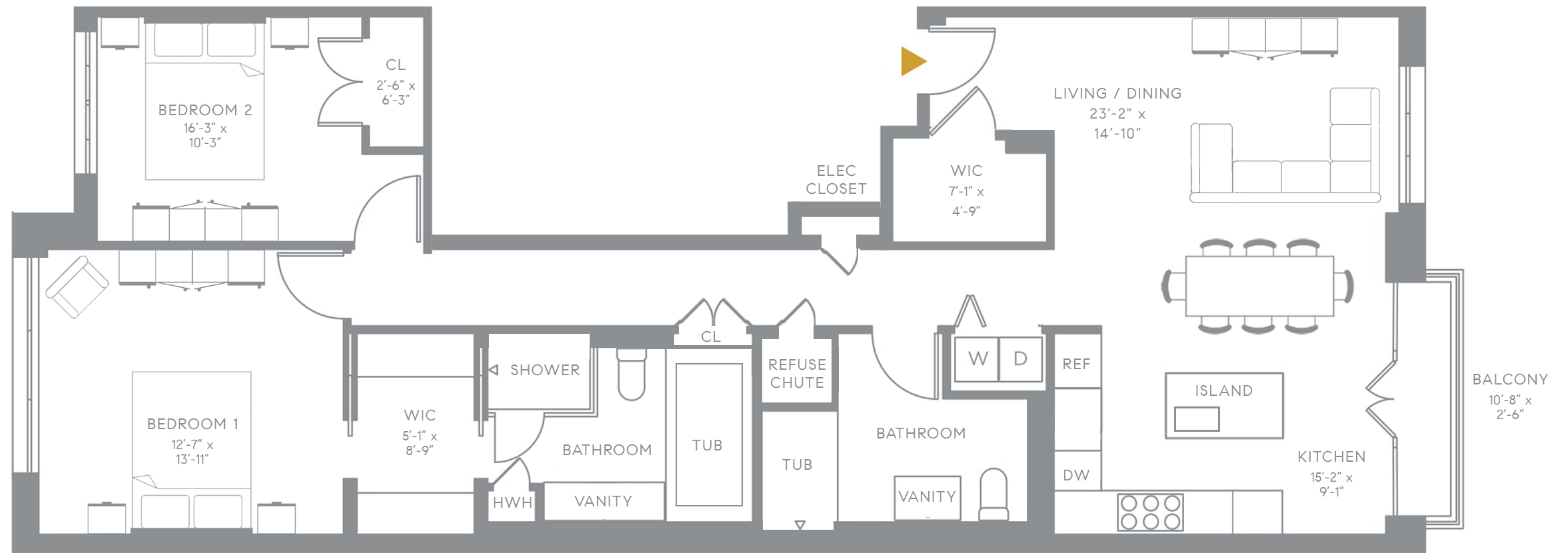
Interior: 1,326 sq ft / 123 m<sup>2</sup>  
Juliet Balcony: 34 sf / 3 m<sup>2</sup>

gramercygates.com

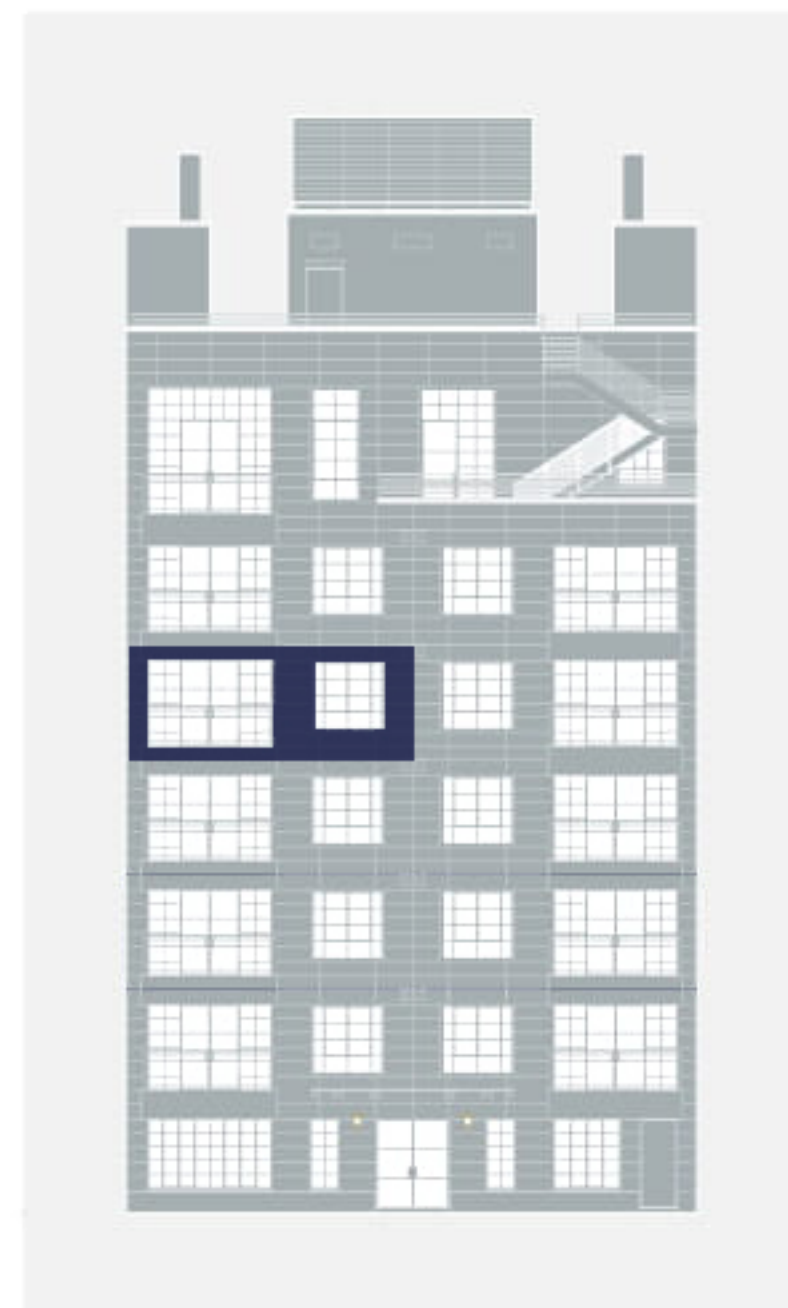
Exclusive Sales and  
Marketing by Compass

Edward Hickey  
914-426-1403  
edward@compass.com

Kelly Wang  
508-851-0385  
kelly@compass.com



22nd Street



DEVELOPED BY: HIGHWATER CAPITAL GROUP

MARKETING BY:



COMPASS



This advertisement is made pursuant to Cooperative Policy Statement No. 1, File No. CD19-0109. Sponsor makes no representation as to the continued existence of any of the named establishments or transportation lines located in the neighborhood. Sponsor makes no representation that future construction in the neighborhood surrounding the Condominium will not result in the obstruction of the views from any windows, gardens, and/or terraces. All square footages and dimensions are approximate and subject to normal construction variances and tolerances. All computer and/or artist renderings reflect the planned scale and spirit of the Building. All depictions of personal property or condominium property, including without limitation any interior furniture, equipment, decorations, finishes, fixtures, appliances, furnishings, and the maturity of the growth in the landscaping, are for illustrative purposes only. Where materials, appliances, equipment, fixtures, and/or other construction or design details are specified herein, Sponsor reserves the right to substitute in each instance one of comparable or better quality as recognized by industry standards for performance, efficiency, longevity, and/or classifications, as applicable, in accordance with the terms of the Offering Plan. Sponsor makes no representations or warranties except as may be set forth in the Offering Plan. The complete offering terms are in an offering plan available from Sponsor. File No. CD19-0109. Sponsor: Gramercy 1860 LLC. 515 Madison Ave. Suite #13C, New York, NY 10022